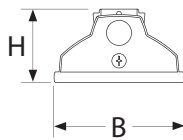
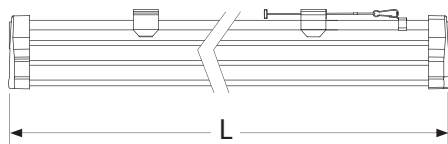
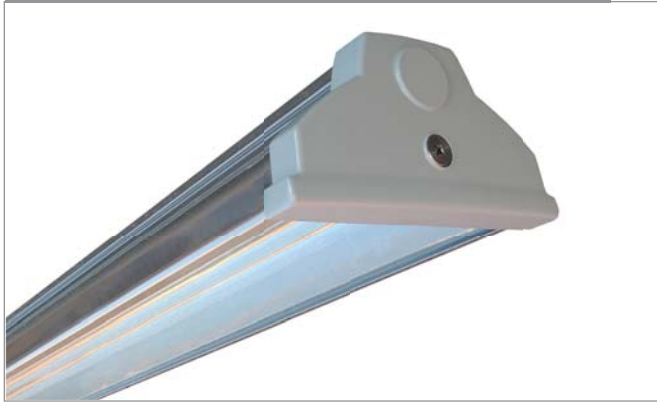


Acciaio stainless steel

Industrial luminaires T8 and T5



Material:

- body: a stainless steel sheet AISI304
- end caps: die-cast aluminium with central screw fixing system
- color of caps: gray
- reflector: polished aluminium parabolic sheet with excellent luminous efficiency and improved ground light distribution
- diffuser: clear tempered glass fixed to the body by means of a crimped silicone gasket

Ambient temperature: $-20 \div +40^{\circ}\text{C}$

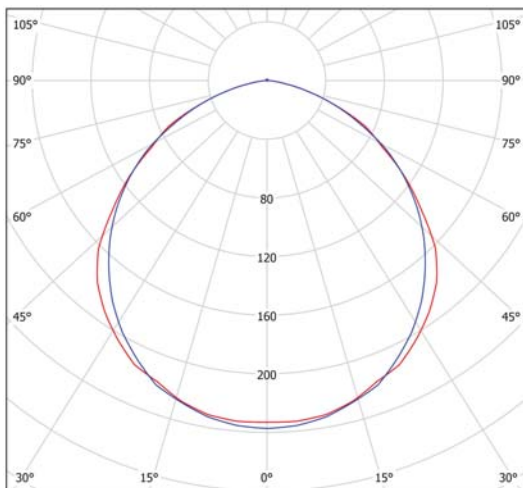
Degree of protection: IP66

Rated voltage: 230 V / 50 Hz

Control gear: electronic ballast, emergency version on request

Mounting: on a ceiling, on a wall or on pendants

Application: industrial premises, warehouses, cellars, factory halls, production lines, farms, garages, tunnels and fuel servicing areas



14805/SG - 2x58W

T8

Code	Power	Lamp	Cap	L×B×H (mm)	Weight kg	Reflector
14803/SG	2×36W	T8	G13	1 320×170×88	4,0	semi-diff.
14805/SG	2×58W	T8	G13	1 620×170×88	4,5	semi-diff.

The fixtures are not equipped with the lamps.

T5

Code	Power	Lamp	Cap	L×B×H (mm)	Weight kg	Reflector
14831/SG	2×54W	T5	G5	1 320×170×88	4,0	semi-diff.
14827/SG	2×35W	T5	G5	1 620×170×88	4,5	semi-diff.
14829/SG	2×49W	T5	G5	1 620×170×88	4,5	semi-diff.
14833/SG	2×80W	T5	G5	1 620×170×88	4,5	semi-diff.

The fixtures are equipped with the lamps 840.

T5

Code	Power	Lamp	Cap	L×B×H (mm)	Weight kg	Reflector
14841/SG	2×35W	T5	G5	1 620×170×88	4,5	concentr.
14843/SG	2×49W	T5	G5	1 620×170×88	4,5	concentr.
14847/SG	2×80W	T5	G5	1 620×170×88	4,5	concentr.

The fixtures are equipped with the lamps 840.